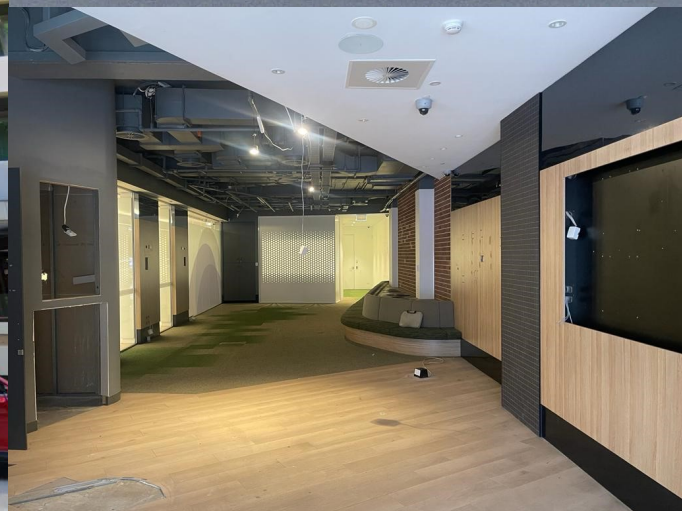
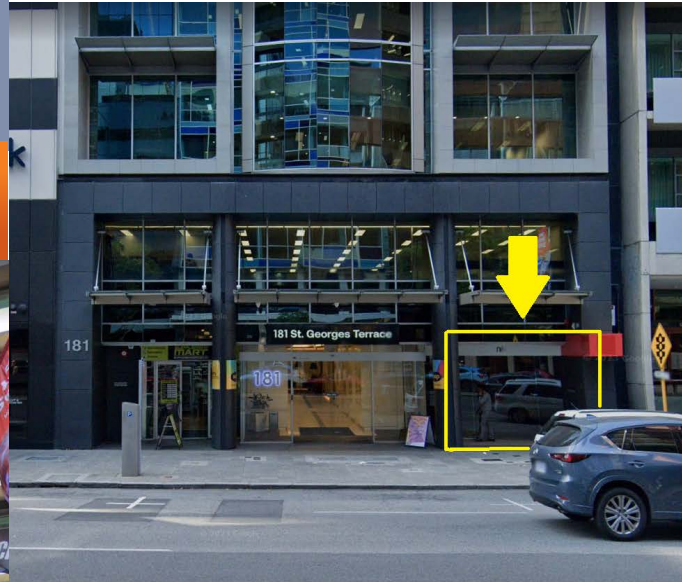
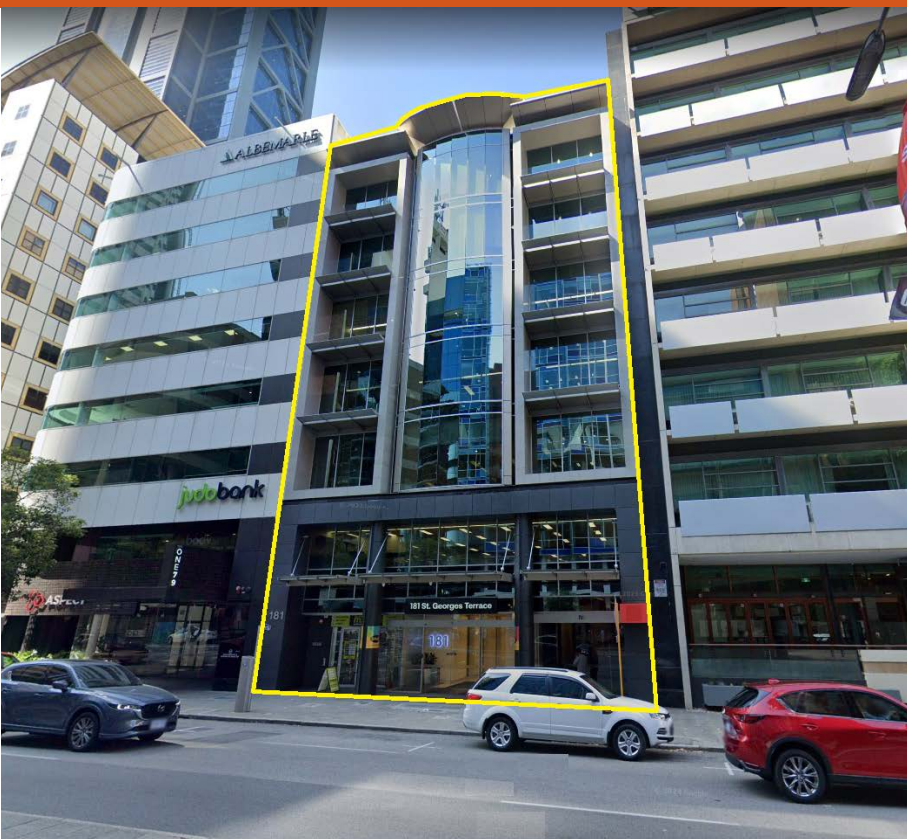


181 St Georges Terrace, Perth
Ground Floor
Retail / Commercial Space

Charter Hall 

Available for Lease



Key Features:

- Great location in the busy West End of St Georges Terrace.
- Tenancy Available 170m² (approximately).
- Available immediately with partial fitout already in place.
- Suitable for a variety of uses with previous tenants being a bank and cafe.
- Positioned between Brookfield Place and Parmelia Hilton Hotel.

www.metierconsult.com

For all further information and to direct suitable opportunities:

Darryll Ashworth
0407 606 933
darryll@metierconsult.com

Justin De Giorgio
0479 095 809
justin@metierconsult.com